

Crankarms

Standard crank 170mm, straight shape.

The standard crankarm is a cold forged, hand polished high quality crankarm.



Standard crankarm 170mm, straight shape

Offset crankarms 102, 114, 127, 140, 152, 160, 165, 170, 172.5 and 175mm

Please note, that these crankarms, all with offset shape, cannot be combined with the easy-shift kickplates!

All crankarms are available either with high polished aluminum or black anodized finish.



89 - 175mm available

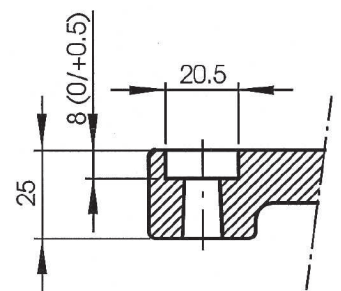


175mm crankarm, offset shape, black anodized

Size of crankarm

If using another than an original **Schlumpf** crankarm, please first check width and depth of the hole and the total width of the crank!

The hole for the gear shift button should have a depth of at least 8mm, and the total width of the crank shouldn't much exceed 25mm.



If using another than an original **Schlumpf** crankarm, please first check width and depth of the hole and the total width of the crank!