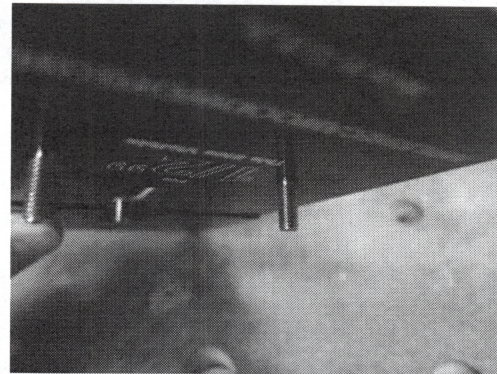




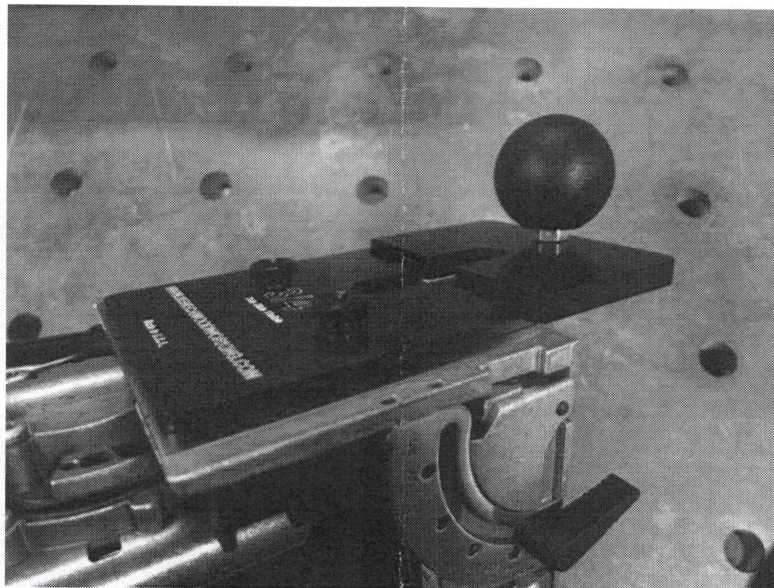
### Domiplate Instructions

The Seneca Woodworking Domiplate is a very simple attachment and using it is even simpler but some information will be helpful getting started using it.

To begin, Install the ball knob and two captive screws on the side of the plate you want to use. Make sure to thread the captive screws entirely into the plate until they spin freely.

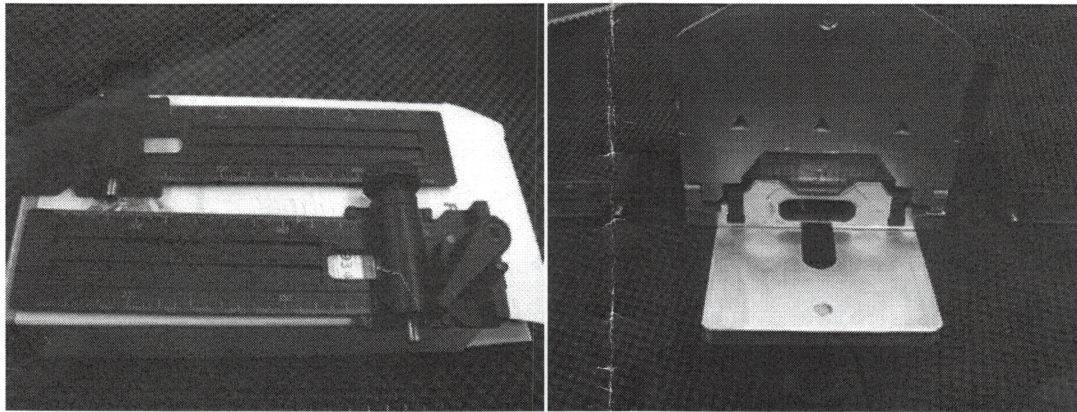


Use the two captive screws to attach the Domiplate to the Domino. Note that when attaching or removing the Domiplate, it's best to alternate between tightening or loosening each screws a few turns, rather than trying to completely install or remove one screw while the other screw is clamping the Domiplate to the Domino. Trying to force one screw all the way through both the Domiplate and Domino while the two are clamped together can cause damage to the threads.

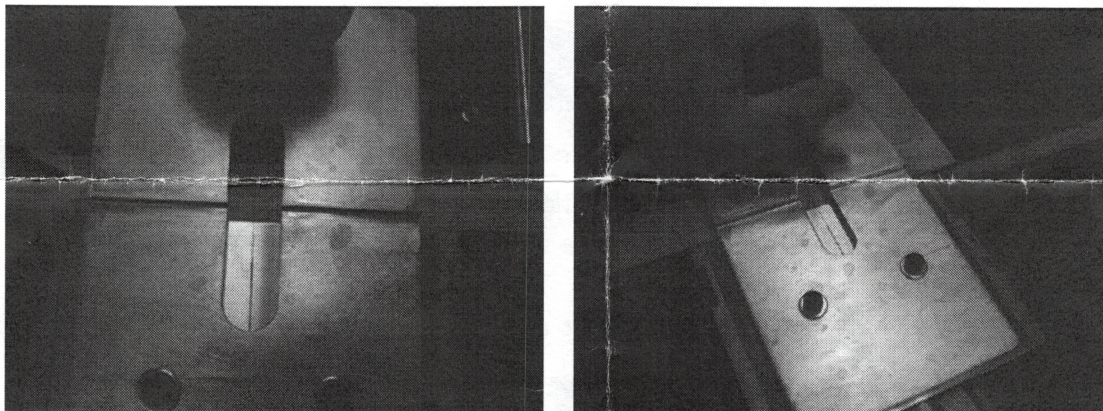




Using the Domino plate allows you to locate your mortises using pencil marked lines, the paddles or pins (depending which model Domino you own) or the Festool # 493488 Cross Stop attachments.



To reference pencil marks simply align the etched Domino center line to the pencil mark and create the mortise. It's good operation technique to apply most all of your hand pressure on the front knob and only enough pressure at the machine "tail" to balance & plunge cut the mortise.



Always reference the Domino mortises from the outside finished faces and edges of the workpiece for perfect alignment when the pieces are glued.

